

# NEED

## Simple Operation

Whether you want to simply browse and play the voices or control an entire MIDI rig, the S90's large LCD screen and intuitive hands-on user interface make it remarkably easy to use.

## Voice Editor and Sequencing Software Included

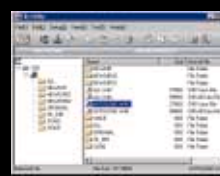
For the power user, the S90 comes with voice editing software for Mac and PC, allowing detailed editing of voice parameters with point and click convenience. And if you want to try your hand at music composition, the bundled SQ01 Open Plug-in Technology\*-compatible sequencing software for Windows® gives you everything you need to make full-fledged songs, including an Auto Arranger function for quick and easy song creation.

\*Open Plug-in Technology is a newly developed software format that allows control over MIDI devices from software sequencers and other music software.  
www.yamahasyth.com/prosp/index.html

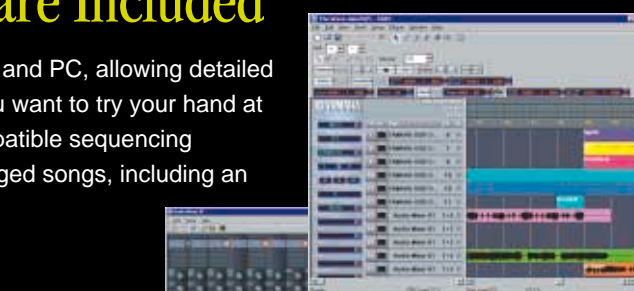
Note: The Windows® voice editor includes a stand-alone editor and a plug-in editor for Open Plug-in Technology-compatible host applications such as SQ01 or Cakewalk's SONAR™ 2.



Voice Editor for S90



File Utility



Music Sequence Software SQ01

## Specifications

<b>Keyboard</b>	88 keys, Balanced Hammer Effect Keyboard (Initial Touch/Aftertouch)
<b>Tone Generator</b>	AWM2, Modular Synthesis Plug-in System
<b>Polyphony</b>	64 Notes (Expandable with Modular Synthesis Plug-in System boards)
<b>Multitimbrals</b>	16 parts (internal) + 3 or more Plug-in Board parts (1 for each Single Plug-in Board; 16 for Multi Plug-in Boards), A/D Input
<b>Voices</b>	Preset: 384 normal voices + 48 drum kits GM: 128 normal voices + 16 drum kits User: 128 normal voices + 16 drum kits Plug-in Preset Bank: 64 (for AN, PE, DX, DR, PC), 192 (for VL) Plug-in User Bank: 64 (for each Plug-in slot)
<b>Performances</b>	User: 128 (Up to 4 parts)
<b>Filter</b>	21 types
<b>Effects</b>	Reverb x 12 types, Chorus x 25 types, Insertion 1 x 25 types, Insertion 2 x 104 types, Variation x 25 types (available for Performance/Song), Master Equalizer (5 bands), Plug-in Insertion (available when the PLG100-VH is installed in slot 1)
<b>Expandability</b>	3 Slots for Modular Synthesis Plug-in Boards
<b>Arpeggiator</b>	Preset 1 x 128 types Preset 2 x 128 types User x 128 types MIDI Sync, MIDI Transmit/Receive Channel, Velocity Limit can be set.

<b>Sequencer</b>	SMF Playback (Direct play only)
<b>Master</b>	User: 128
<b>Sequencing Software controllable via the Remote Control function</b>	For Windows® Cubase VST™ V5.1r1, Logic Audio® Platinum Ver. 5, SONAR™ 2, Cakewalk Pro Audio™ Ver. 9.0, Pro Tools® V5.0, SQuT For Macintosh® Cubase VST™/32, Logic Audio® Platinum Ver. 5, Pro Tools® V5.0
<b>Controllers</b>	Pitch Bend wheel x 1, Modulation wheel x 1, Master Volume Slider x 1, Assignable Control Slider x 4, Rotary Encoder x 1
<b>Display</b>	240 x 64 dot graphic backlit LCD
<b>External Memory</b>	SmartMedia™ (3.3V) Card capacities up to 128 MB are supported
<b>Connectors</b>	OUTPUT MONO, R (1/4" Jack), ASSIGNABLE OUTPUT L, R (1/4" Jack), PHONES (Stereo 1/4" Jack), FOOT CONTROLLER 1, 2, FOOT SWITCH x 2 (SUSTAIN, ASSIGNABLE), BREATH, MIDI IN/OUT/THRU, USB, AC INLET
<b>Dimensions, Weight</b>	1,357 (W) x 386 (D) x 163 (H) mm, 23.0 kg 53 3/8" (W) x 15 1/8" (D) x 6 3/8" (H), 51 lbs.
<b>Accessory</b>	TOOLS for S90 CD-ROM

\* Specifications and appearance subject to change without notice.  
\* All trademarks and registered trademarks are property of their respective owners.



For details please contact:

**YAMAHA**  
YAMAHA CORPORATION  
P.O. BOX 1, Hamamatsu Japan  
[www.yamahasyth.com](http://www.yamahasyth.com)

PRINTED WITH SOY INK This document is printed on chlorine-free (ECF) paper with soy ink.

LCK0203 Printed in Japan

YAMAHA

# S90

MUSIC SYNTHESIZER  
Modular Synthesis Plug-in System

# JUST WHAT YOU

If you're looking for a full-size keyboard with great sounds and exceptional touch, the S90 has just what you need—and nothing you don't. It's perfect for those who simply want all the award-winning MOTIF's high quality sounds and one of the world's most expressive three-layer piano sounds all in an affordable, portable 88-note weighted synthesizer.

## Stunning Sounds

The S90 contains the best sounds of Yamaha's flagship MOTIF synthesizer—plus a new, three-layer sample of a top-of-the-line grand piano! This incredible selection of high quality sounds gives you a complete sonic palette for creating any style of music.

## System Expansion

Complete with a USB-MIDI interface, Modular Synthesis Plug-in System expandability, bundled software applications and more, the S90 is ready to meet the needs of any music-making environment, from studio to stage.

MODULAR SYNTHESIS  
PLUG-IN SYSTEM



# The Best Features of the S Series, the Great Sounds of MOTIF—and More!

Over the years, Yamaha S series synthesizers have set new standards for sound quality, features and value. And with the new S90 Music Synthesizer, that tradition continues.

Developed to be our most feature-packed S series synth to date, the S90 inherits the best features of the S series line—plus the great sounds and user interface of our award-winning MOTIF synthesizer. In addition to superb piano action,

a powerful arpeggiator and 24-bit effects, the S90 gives you 110MB\* of wave samples—more than any other keyboard in its class. And as if that weren't enough,

we generously equipped it with three expansion slots for Modular Synthesis Plug-in System boards, so you can add new and exciting synthesis possibilities according to your musical needs.

\*When converted to 16-bit linear format.

## 110MB of Incredible Sounds!

The S90's huge wave ROM hosts one of the most extensive voice libraries ever available in one keyboard. Here you'll find some of the best piano sounds in the world, including a brand-new grand piano voice featuring three layers of stereo samples that switch dynamically according to how hard you strike the keys, for the ultimate in piano expression. Plus there's an exhaustive selection of bread-and-butter sounds from the amazing MOTIF music workstation, including many of its popular electric pianos, strings, brasses, synthesizers and drum kits. And for those who want even more synthesis power, the S90 provides three expansion slots to add Modular Synthesis Plug-in System boards.

## Powerfully Simple

Although loaded with powerful features, the S90 is surprisingly easy to use. Its intuitive user interface, centered on a 240 x 40 dot LCD screen and rotary encoder, lets you quickly navigate through menus and edit various settings. A Function Control matrix and four physical sliders give you instant access to and realtime control over part volumes, filter cutoff, effects, EQ and other frequently used parameters. And with the S90's convenient Category Search function, pressing a button is all it takes to find the sound you're looking for.

## Advanced Master MIDI Control Functions

Not just a great synthesizer, the S90 also makes a wonderful MIDI controller. Equipped with four assignable data sliders, it provides extensive realtime control over external synthesizers. Plus four programmable keyboard zones let you create complex split and layered voice combinations using a mix of internal and external voices. Entire MIDI setups can be stored in User Performance memory and recalled at the touch of a button.

## Interactive Arpeggiator

The S90's realtime performance arpeggiator packs a wide range of patterns and styles, giving you musical inspiration at the flick of a switch. In addition to conventional arpeggio patterns, it's loaded with an impressive array of musical phrases, including guitar strumming, drum grooves, keyboard riffs and more. Instead of trying to clone these performances with computer-generated algorithms, the S90 uses a more musical approach: It uses MIDI data recorded by real musicians. You can even program your own patterns and layer several arpeggiated voices together in a Performance.

## Plug in to the Power of the Modular Synthesis Plug-in System

With three expansion slots for Modular Synthesis Plug-in System boards, the S90 is potentially four synthesizers in one! Offering new synthesis capabilities from FM to physical modeling as well as more polyphony, effects and multitimbral parts, these plug-in boards let you customize the S90 with the exact synthesis power you need, whenever you need it. The voice data for every plug-in board currently available is already stored in the S90's ROM, so you'll have a great selection of new sounds the moment you install a plug-in board.



## 88-Note Keyboard with Exceptional Piano Touch



The S90 uses the same Balanced Hammer Effect (BH) keyboard as the MOTIF 8. Based on the Graded Hammer Effect keyboard found in Yamaha's best digital pianos, this weighted-action keyboard provides an exceptionally smooth and realistic piano touch—yet, because it features an even balance from top to bottom, voices such as drums and synth basses will feel more responsive to your playing. And for even more performance expression, it also features aftertouch.

## USB-MIDI Interface

Equipped with a USB-to-MIDI interface, the S90 is ready to connect to your USB-equipped Macintosh® or Windows® computer without the need for any additional hardware.



## SmartMedia™ Playback Sequencer

The S90's playback sequencer lets you play back standard MIDI files (format 0) directly from a SmartMedia™ card. Use this function to build up a library of up to 100 songs, any of which can be instantly called up at the touch of a button—great for live performance! Chain playback is also possible. The included File Utility software makes it quick and easy to transfer MIDI files from your computer to a SmartMedia™ card, so you can leave your PC at home the next time you do a gig.

## Connect to the Future of MIDI and Audio with mLAN

Yamaha's new mLAN interface technology makes it possible to route all your digital audio and MIDI signals—both input and output—through a single, high-speed IEEE 1394 cable, greatly simplifying the process of connecting and configuring your digital musical equipment. Equipped with an expansion slot for optional mLAN interface boards, the S90 gives you access to this amazing music network technology.



MODULAR SYNTHESIS  
PLUG-IN SYSTEM

**Drums Plug-in Board**  
**PLG150-DR** DXE for XG

Ultra realistic stereo-sampled drum kits

**Percussion Plug-in Board**  
**PLG150-PC** DXE for XG

An oasis of world-class Latin percussion

**Analog Physical Modeling Plug-in Board**  
**PLG150-AN** DXE for XG

Warm and punchy analog modeling synthesizer

**Advanced DX/TX Plug-in Board**  
**PLG150-DX** DXE for XG

Get the classic sounds of the DX-7 synthesizer

**Virtual Acoustic Plug-in Board**  
**PLG150-VL** DXE for XG

Acoustic modeling synthesizer with expressive realtime control

**Piano Plug-in Board**  
**PLG150-PF** DXE for XG

Superb piano voices with 64 notes of dedicated polyphony

**XG Plug-in Board**  
**PLG100-XG** XG

High-quality XG voices with 16 multitimbral parts

**Vocal Harmony Plug-in Board**  
**PLG100-VH** DXE for XG

Complement your singing with three-part harmony!

